



FOR YOUTH DEVELOPMENT®  
FOR HEALTHY LIVING  
FOR SOCIAL RESPONSIBILITY



# A Better Us

2014 ANNUAL REPORT TO THE COMMUNITY  
YMCA OF HONOLULU

# Leadership Report

Dear YMCA family and friends,

**Opportunities.** A simple word, but yet so powerful in what it means to an individual, family and whole communities.



At the Y, it means ensuring that everyone, regardless of age, income or background, has the opportunity to learn, grow and thrive.

It means we believe all kids have amazing potential and deserve an opportunity to discover who they are and what they can achieve. From the youngest in our early learning and A+ after-school programs to the teens in our leadership initiatives, the Y gives kids and teens a safe place to belong, build confidence and learn positive behaviors grounded in our core values of caring, honesty, respect and responsibility. The result? Kids can make their dreams a reality.

It means we believe being healthy means more than simply being physically active. It's about maintaining a balanced spirit, mind and body. We provide opportunities for everyone to reach their potential to lead fuller lives regardless of their age or ability. We provide programs that foster connections through fitness, sports, fun, shared interests. We also provide programs that focus on specific needs for our seniors and those living with chronic diseases such as diabetes, arthritis, obesity and Parkinson's Disease. The result? Everyone gets more out of life.

It means we believe the desire to belong and help others is human nature, and everyone has something of value to contribute. We create opportunities for everyone to reach out to give back as volunteers, donors and collaborative partners—in order to help our most vulnerable and deserving neighbors achieve their dreams for better lives. We offer social service programs in education, health, character building and leadership and raise more than a million dollars each year to ensure everyone has access to Y programs and services regardless of their ability to pay. The result? Together, we strengthen our communities.

Our Y stories of opportunities and achievements in this annual report capture only a small slice of who we are. Yet these remarkable accomplishments remind us why thousands of people continue to come through our doors, generation after generation.

Now, when you think of our YMCA of Honolulu, you'll know it's more than just a gym... it's a cause that provides opportunities. A cause, which, thanks to your generous support, continues to strengthen the community in which you live.

Aloha and mahalo,

Michael Broderick  
President and CEO

Lance Wilhelm  
Metropolitan Board Member



## THE Y. SO MUCH MORE

### At the Y, we believe...

... All kids have amazing potential and deserve an opportunity to discover who they are and what they can achieve.

... Everyone deserves the support, guidance and resources they need to become and stay healthy in spirit, mind and body.

... Providing opportunities for everyone to get involved and give back, allows us to work together to provide programs, financial assistance and resources to those who need our help the most and to build stronger communities.

Turn the page for a snapshot of what our "beliefs" made possible in 2014...



### Youth & Government

Eighty-eight students in grades 6 through 12 participated in the 64th Annual YMCA Youth & Government program. The program empowers youth to become servant leaders and responsible citizens through training in the theory and practice of making public policy. Participants in the program served in the mock Legislative Branch as Lobbyists, Representatives, Senators, and as the Youth Governor and in the Press Corps as Youth Journalists, Reporters, and Camera Technicians under the supervision of the elected Youth Editor in Chief. Mahalo to Hawaii Moving Ahead, Daniel K. Inouye Memorial Fund of the Hawaii Community Foundation and Ward Village Foundation for their generous donations.

### Y College Camp

Y College Camp is a college preparation and leadership program designed to support, motivate, and encourage students from underserved populations to graduate and pursue higher education. Students experience dorm living, participate in service projects, college and career workshops, activities and visit college

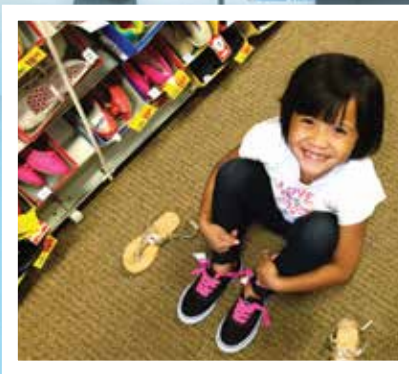
campuses. This year's program was available at no cost to participants thanks to the generosity of AT&T, the Harry and Jeanette Weinberg Foundation Educating the Heart program, Mamoru and Aiko Takitani Foundation and the McInerney Foundation.

### Silver 60

Through a generous grant from The Harry and Jeanette Weinberg Foundation, 100 low income seniors received a fully subsidized annual membership at the Milliani, Leeward, Nuuanu, and Kalihi Y branches—helping them to connect and to live their lives on their own terms.

### Togetherhood

Kaimuki-Wai'alaie YMCA members, Xerox Hawaii employees, and their families decorated and filled over 100 shoeboxes with toiletry items, children's toys gifts and \$15 gift cards for Longs Drugs for Waimanalo families in need. This Shoebox project is part of the YMCA Togetherhood Program which invites Y members to lead and participate in fun and rewarding volunteer service projects that benefit the communities we live in.



### Payless Shoes 4 Kids

In May, the Y was selected as a partner of Payless Gives Shoes 4 Kids, an annual giving program providing merchandise certificates to families in need. Through the program, 125 children from the YMCA of Honolulu's A+ Program were able to get a new pair of shoes.

### Summer Food Program

Over 200 children at our Kalihi and Leeward branches enjoyed free healthy meals through our summer youth program. These branches were selected as recipients of the Walmart Year Round Meal Program Grant, which provides nutritious meals and snacks in an effort to combat childhood hunger.

**Watch these 2014 programs in action!** Scan the QR Code or go to [www.ymcahonolulu.org/about/financial](http://www.ymcahonolulu.org/about/financial)



SCAN FOR MORE INFO



ABOVE: Nu'uuanu Y Branch SPLASH graduation with Island Insurance Foundation President Tyler Tokioka and YMCA President and CEO Michael Broderick.



### Healthy Kids Day

At the 6th Annual YMCA Healthy Kids Day, over 4,000 individuals took part in a FREE, fun filled day of family friendly activities! Thanks to United Healthcare Community Plan, OHA and other generous sponsors along with 30 community partners, families enjoyed interactive games, free health screenings, fun active play and educational activities all designed to keep kids moving and learning, in order to maintain healthy habits and academic skills to achieve goals and reach their full potential.

### SPLASH

In Hawaii, only 41% of our population can swim. The YMCA's SPLASH (Swim, Play and Learn Aquatic Safety Habits) is a free water safety program offered to more than 100 kids from various schools in some of Oahu's low socio-economic areas. Kids are taught water safety, swimming skills, rescue skills, and character development and provided with swim suits, goggles and rash guards. Thanks to donations from Atlas Insurance, Island Insurance, ABC Stores and the Waipahu Community Foundation, we were able to help 379 children in 2014!



# Providing a Turning Point

Ask any middle school student and many will tell you quite honestly that they are “not that into school.” Neither was Eleana. She didn’t pay attention in class and let her homework slide. It got so bad that she almost failed the seventh grade.

But, after joining the Y’s Club Mid After-school Program, supported by the David C. Ai Charitable Trust, Eleana started to focus on her homework. “The Y staff took time to explain material that I had trouble understanding and gave me a ton of encouragement,” recalled Eleana. Her grades slowly began to improve. It proved to be a turning point. But the Y was more than that to Eleana.

“In Club Mid, I made friends with other teens that went to my school who I normally wouldn’t even think to talk to,” Eleana says. “I also got a chance to meet teens from other schools and developed friendships with many of them.”

The Y after-school program also kept her out of trouble.

“People I knew would steal from the 7-Eleven near our school, smoke cigarettes, or get into fights,” she says. “Bullying is a big problem too. The Y kept me safe and away from bad influences.”

She says the Y also taught her about responsibility, living healthy and the value of giving back as a volunteer and servant leader.

“I’m now in high school and take academics very seriously,” she says. “I regularly volunteer at the Y with Club Mid and am a member of the Nu’uanu Teen Council. Someday, I hope to have a career at the Y so that I can give back to the organization that gave me so much.”



## OPPORTUNITIES

## ENCOURAGEMENT



Youth sparkle with potential. Through nurturing care, knowledge and guidance, the Y helps young people to realize their talents and life opportunities.



TRUST



# Every Step Matters

The prognosis for Myrna Ornganista was dire. In 2009 she was working as a nurse at Maunalani Nursing Center when she was stricken with Guillain-Barre Syndrome, a degenerative disorder of the body's nervous system. She spent five months in the Intensive Care Unit on life support and nearly died several times.

Deemed a "severe quadriplegic," even with intensive physical, occupational and speech therapy, Myrna was unable to walk, eat, swallow or speak. Her only form of communication were eye blinks and eyebrow raises.

Eventually, she was sent home with a feeding tube and 24/7 care. Ongoing therapy helped her regain her ability to speak and eat, but Myrna was still immobile. Her therapist suggested the Y.

With the help of a chair lift, her husband, her caregiver and the Leeward Y staff, Myrna began water exercises, using weights to simulate walking and the buoyancy of the water to move her arms. It was tough and progress was slow, but she eventually progressed to resistance machines outside of the pool.

Then a year after joining the Y, against all odds, Myrna began walking using a walker. She continues to faithfully exercise at the Leeward Y. Her goal is to walk unassisted and become independent once again. With her determination, it doesn't seem as far-fetched as it might have a year ago.

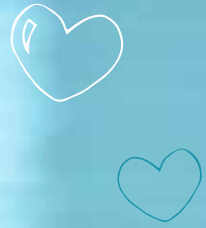
"I am very thankful to the Leeward Y staff for helping me with my rehab," Myrna says. "I don't know where I would be today without their dedication and unwavering support."

## GUIDANCE



## AGAINST ALL ODDS

Living healthy is about spirit, mind and body at every age, stage and ability. At the Y, we provide opportunities to help everyone in our communities achieve their goals.



SPIRIT

# Keeping Those Golden Years Golden

Carl first came to the Kaimuki Y last May through our Summer Promotion, looking for ways to keep healthy and busy after his wife passed away. He became a regular, attending every morning class in and out of the pool.

On the surface, Carl was outgoing and always had a smile for everyone. During Christmas, Carl could be seen wearing his Santa hat and walking through the courtyard greeting his Y family every day. Last year, he donated all of the Christmas ornaments he and his wife had collected over the years.

However staff learned that Carl was battling Parkinson's Disease. Diagnosed seven years ago, Carl admitted it really scared him as he had seen others in advance stages of the disease. He was determined to do whatever he could to control it. The Y's Parkinson's Disease Program, a fitness class designed specifically for people living with Parkinson's Disease, was a great start for Carl. He found added benefits in being able to bond with others living with the challenges of Parkinson's. "When you're fighting this disease 24/7, it's so important having the support of staff

and others who understand." The Parkinson's Disease program is part of the Y's focus on helping those living with chronic diseases that include diabetes, obesity and arthritis.

Today, Carl is a whirlwind of activity. He enjoys ballroom dancing, is an avid surfer and has expanded beyond his Parkinson's classes to the Y's kickboxing, jazzercise and aquatic classes. Financial assistance, supported by donors to our Annual Support Campaign, allowed Carl, who was living on a fixed income, to continue his membership beyond the Summer Promotion so he could keep battling Parkinson's on his own terms and keep his golden years golden.

I ♥ the Y  
DETERMINATION

Giving back and providing support to our neighbors. At the Y, we create a community that reaches out to give back—in order to help our most vulnerable and deserving neighbors achieve their dreams for better lives.

# SUPPORT



# IMPACT IN 2014

THE YMCA PROVIDED THE FOLLOWING  
FOR O'AHU COMMUNITIES:

## \$1,121,564

Annual Support Campaign dollars raised to support innovative, community-based programs and financial assistance for families in need who were unable to afford Y programs.

## 4,122

Children kept healthy and learning through Y Summer Day Camps.

1,791 Teens given the opportunity to work towards their potential in self-discovery, confidence and leadership.

Provided in financial assistance for memberships, youth programs and Camp Erdman.

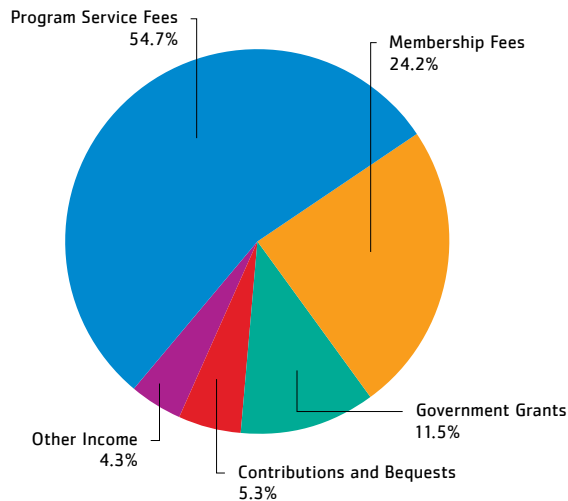
## \$781,200

## 113,906

men, women and children who were helped by a Y program or service.

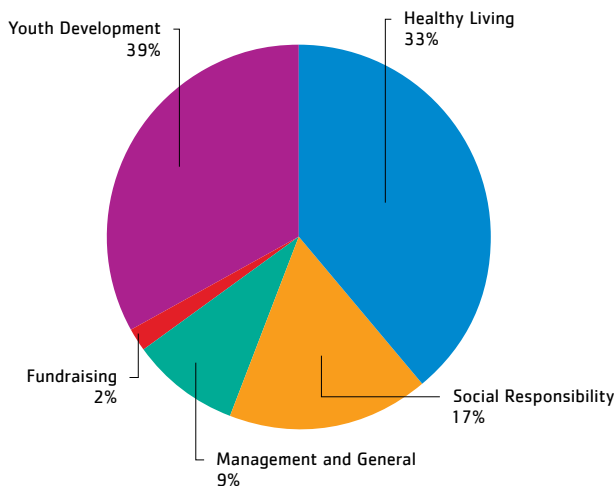
## 7,000

Children kept safe and thriving in Y A+ After-School Programs.



### OPERATING REVENUE AND SUPPORT 2014

Program service fees	\$ 15,498,800
Membership fees	6,860,000
Government grants	3,268,900
Contributions and bequests	1,489,700
Other income	1,208,200
<b>Total revenue and support</b>	<b>\$ 28,325,600</b>



### OPERATING EXPENSES 2014

Healthy Living	\$ 9,211,800
Youth Development	11,115,900
Social Responsibility	4,811,200
Management and general	2,484,700
Fundraising	462,400
<b>Total expenses</b>	<b>\$ 28,086,000</b>
<b>Net Mission Reinvestment</b>	<b>\$ 239,600</b>

## 2014 FINANCIAL INFORMATION

### DECEMBER 31—ALL FUNDS

2014

#### Assets

Cash and cash equivalents	\$ 3,443,100
Accounts receivable, net	1,402,000
Prepaid expenses	618,100
Inventory	35,800
Investments	10,102,200
Land, buildings, and equipment	32,728,300

**Total assets** \$ 48,329,500

#### LIABILITIES AND NET ASSETS

##### Liabilities

Accounts payable and accrued expenses	\$ 1,809,600
Deferred revenues	2,238,900
Debt	—
Other liabilities	316,300

**Total liabilities** 4,364,800

**Total net assets** 43,964,700

**Total liabilities and net assets** \$ 48,329,500

WE ARE A

4-STAR CHARITY!



Charity Navigator, America's premier charity evaluator, awarded the YMCA of Honolulu a 4-star rating, which is the highest rating a nonprofit organization can receive for its sound fiscal management and commitment to accountability and transparency. As a coveted 4-star organization, the YMCA of Honolulu belongs to the top quarter of all charities in America and joins only 6 other non-profits in the State of Hawaii who have achieved this premiere rating!

# Heritage Club 2014

The Heritage Club is a group of generous donors committed to ensuring the continued influence of the YMCA on future generations of youth and families through planned gifts to the YMCA Endowment. If you are interested in joining the Heritage Club, please contact Kerri Van Duynes, Vice President of Development, at 808-541-5473 or by email at kvanduyne@ymcahonolulu.org.

Peter and Eri Ackman  
Robert and Velma Akinaka  
Dorothy B. Anderson  
Perpetual Charitable Trust  
Donald and Susan Anderson  
Dawn Aull  
Franklin Belding  
Deloris Brain  
Dr. Paul and Lindsey Carry  
Sandra Chang  
Richard Ching  
Howard Chong  
Geraldine Choy  
Mark Chun  
Philip Chun  
Kyung Sun Chung  
Henry B. Clark, Jr.  
and Charlotte Clark  
Fred K. Cordes  
Michael and Lisa Doss  
Esther Dye  
Monte Elias  
Dennis Enomoto  
Earl H. Fujii  
Al Gima  
Alice Ching Goldsmith  
Sandra Joy Goldsmith  
Anthony H. and  
Maria Helena Good  
James and Rosalind A. Hamby  
Audrey and Steven Hidano  
Nelson Higa  
Charles Holt  
Kenneth Hoo  
Gilbert Horita  
Roy Imai  
Brad and Sharon Ishida  
Kent and Elizabeth Keith  
Rose Kim  
Guy Kirkman  
Paul Kuromoto  
Nora and Harry Kurosu

Wyman W.C. Lai  
Thomas K. Lalakea  
Harry K. Lee  
David C. and Pam Livingston  
Fenton and Betty Lum  
Samuel and Esther Luna  
Margie Maket  
John Marshall  
Robert K. Masuda  
and Jane E. Sherwood  
Stanford and Doretta Masui  
Rodney and Lena Matsumoto  
Osamu Matsuzawa  
Dorothy Miyashiro  
Michael Nakao  
Lorynn Nesper  
John Norden  
Barb Okabayashi  
Mary Olsen  
Alan M. and JoAnn Oshima  
Karla and Vic Redding  
Henry Rice  
Larry and Patricia Rodriguez  
Liane Sakai  
Melvin Sakuma  
Philip Sammer  
Michael Sen  
Raymond W.L. and Phyllis Seto  
John Stallman  
James Sylvester  
Nancy N. and Stuart N. Taba  
Steven T. and Kathleen Takaki  
Daniel and Ethel Takamatsu  
Samuel T. Tanimoto  
Ronald Tobar  
Roy and Victoria Tokujo  
Sabrina Toma and Cedric Akau  
James and Doris Tomita  
Arles Tooker  
Theodore S. Trimmer  
Clive Ushijima

Tetsuro Ushijima  
Harry and Jeanette  
Weinberg Foundation  
Edgar Williams  
Cynthia Winegar  
Randall Winn  
John Wong  
Stephen C.L. and Susan Wong  
Wayne Yamamoto  
August Yee  
John Young



# Tribute Gifts 2014

The List of Tribute Gifts covers January 1–December 31, 2014. Every effort has been made to ensure the accuracy of this list. However, if you find an error, please accept our apology and notify us at 808-541-5483 so we may correct our records immediately.

## Honor Gifts

These gifts pay tribute to the individuals for whom a donation has been made.

### In Honor of Michael Broderick

Chris and Melissa Ching Benjamin Fund  
Davis Levin Livingston Charitable Foundation  
Dr. Laurie Tom

### In Honor of Philip Chun

Charlotte and Bert Malott

### In Honor of Solomon Hao

Ward Research Inc

### In Honor of Ralph Ramirez

Robert Pizzo

### In Honor of Karen Robertshaw

Locations Foundation

## Memorial Gifts

A memorial gift is a beautiful testament to the life of a loved one. In 2014, the following contributions were received in tribute.

### In Memory of Barney T. Aoki

Beryl Ono Stapleton

### In Memory of Credo Bisquera

Beryl and Patrick Jim

### In Memory of Dai Sun & Betty Chang

Lorrie Chang

### In Memory of Earl Chapman

Earl M. and Margery C.  
Chapman Foundation  
Davis Levin Livingston  
Charitable Foundation

### In Memory of Kazuko Ching

Deborah Ching

### In Memory of Barbara Dew

Kevin Miyama

### In Memory of Edna Funayama

Barbara Ohta

### In Memory of Albert Larry Gaddis

Patricia Sasaki

### In Memory of Kenzo Ito

Ken Ito

### In Memory of Michael Leineweber

Alan Kido

### In Memory of Janice Low

Anonymous

### In Memory of Alicia Moreno

Anonymous  
Ronald Ithori  
Linda Kidani  
Billie and Michael Pangilinan  
Rita Speitel  
Anita Stern  
Elaine Sunahara  
Eleanor Takahama  
Lucille Thares

### In Memory of Eleanor Nordyke

Donald and Susan Anderson  
Gail and William Atwater  
Bella Z. Bell  
Michael F. Broderick and Maile T. Meyer  
Lydia Chock  
Joan Choi  
Dr. Michael and Bina Chun  
Robyn Crumly  
KahBo Dye-Chiew  
Jean Evans  
Laura & Bruce Fink  
Lelde Gilman  
Cynthia Jean Goto  
Linda Green  
IP & H Griggs  
Sarah Hamilton Preble  
Barbara and James Hamlin  
Dennis Ihara  
Lila Rae Johnson  
David and Gloria Kern  
Louise Knowlton  
Joanne Lee  
Bertha Lum  
Mandy MacMahan  
Luanna McKenney  
Melodee Metzger  
Sylvia Mitchell  
Barbara Phillips  
B Leilani Pyle  
Candace Reinhardt  
Delcinda Saito  
Ward Saunders  
Lee and David Takagi  
Liberty Tandaguen  
Kerri B. Van Duyne  
Wendi Woodstrup  
Marjie Yokoyama

### In Memory of Ken Sanders

Shelly Gilman

### In Memory of Keyan Sato

Alan Kido

### In Memory of Helen Ushijima

Leatrice and Richard B Arakaki  
Cheryl and Edward Mokuau

### In Memory of Calvin G. Wakai

Glenn Wakai

### In Memory of Kamaile Williams

Fulgencia Malate Pablo



# 2014 Donors

The List of Donors covers January 1–December 31, 2014. Every effort has been made to ensure the accuracy of this list. However, if you find an error, please accept our apology and notify us at 808-541-5483 so we may correct our records immediately.

## \$10,000 +

Anonymous  
 City Mill Company, Ltd./  
 David C. Ai Charitable Trust  
 City Mill Company, Ltd./  
 Chung Kun Ai Foundation  
 Aloha United Way  
 AT&T  
 The Samuel N. and Mary  
 Castle Foundation  
 Alice E. Davis Trust  
 Friends of Hawaii Charities, Inc.  
 The Estate of Wayne and  
 Phyllis Gocke  
 David and Colleen Haig  
 Hawaii Moving Ahead  
 Healthways, Inc.  
 HMSA  
 Daniel K. Inouye  
 Memorial Fund of the Hawaii  
 Community Foundation  
 John and Yvonne King  
 McInerney Foundation  
 Mosher Galt Foundation/  
 Dawn Aull  
 Alan and Priscilla Nagao  
 Omidyar 'Ohana Fund of the  
 Hawaii Community Foundation  
 Precor USA  
 The Schuler Family Foundation  
 John Spadaro  
 Mamoru and Aiko Takitani  
 Foundation, Inc.  
 James and Doris Tomita  
 UHA  
 UnitedHealthcare  
 Community Plan of Hawai'i  
 The Howard Hughes Corporation  
 Ward Village Foundation  
 Harry and Jeanette Weinberg  
 Foundation  
 Henry and Colene Wong  
 Foundation  
 Y USA (YMCA of the USA)

## \$5,000 – \$9,999

AG Management, Ltd.  
 AlohaCare  
 Donald and Susan Anderson  
 Aoao Ilikai Apartment Building  
 Atherton Family Foundation  
 Bank of Hawaii  
 CKW Financial Group, LLC  
 Charitable Fund  
 Englekirk Structural  
 Engineers, LLC  
 First Hawaiian Bank  
 Wayne Y. and Laurie Hamano  
 Hawaii Hotel Industry Foundation  
 Hui O Na Wahine  
 Brad and Sharon Ishida  
 Island Insurance Foundation  
 Matson  
 Michael and Gail Kawaharada  
 Kiewit Companies Foundation  
 Kook Min Hur Foundation  
 Davis Levin Livingston  
 Charitable Foundation  
 George Mason Fund  
 Nan Chul Shin Foundation  
 Oceanic Time Warner Cable  
 Office of Hawaiian Affairs  
 Pacific Resource Partnership  
 Rotary International  
 Liane Sakai  
 Servco Foundation  
 Luella Spadaro  
 Tamotsu Kouchiyama Trust  
 Waipahu Community Foundation  
 Glenn Wakai  
 Walgreens  
 Sue and Walter Wild  
 Jim and Deanna Yates  
 Anthony and Kaori Yee

## \$2,500 – \$4,999

Acme Vending Corporation  
 Steven C. Ai Charitable Gift Fund  
 American Savings Bank  
 Ananda Fund Hawaii of the  
 Hawaii Community Foundation  
 Dorothy B. Anderson Perpetual  
 Charitable Trust  
 Bryce E. Uyehara, A.I.A., Inc.  
 Dr. Paul and Lindsey Carry  
 Central Pacific Bank  
 Earl M. and Margery C.  
 Chapman Foundation  
 Chevron Hawaii  
 Hung Wo & Elizabeth  
 Lau Ching Foundation  
 Goodwill Anderson Quinn  
 & Stifel, LLP

Grace Pacific LLC  
 Hawaii Energy  
 Hawaii Law Enforcement  
 Association  
 Hawaii Nissan  
 Hawaiian Electric Company, Inc.  
 Hoakalei Charities  
 Ironworkers Union Local 625  
 Timothy E. and Robin Johns  
 JTB Hawaii, Inc.  
 Kaiser Permanente  
 Kalihi Y's Men's & Women's  
 Service Club  
 Kapiolani Medical Center for  
 Women & Children  
 The A.C. Kobayashi Family  
 Foundation, Inc.



KYO-YA Hotels & Resorts, LLP  
Local Union 1186 IBEW  
Robert K. Masuda and  
Jane E. Sherwood  
Jean & William K.H.  
Mau Foundation  
Metro YMCA  
Mid Pac Petroleum, LLC  
Joan Namkoong  
Palekana Permits, LLC  
Michael and Judy Pietsch  
The Queen's Medical Center  
Ralph S. Inouye Co., Ltd.  
Russell and Dale Saiki  
Keith M. and Lisa Sakamoto  
Servco Pacific Inc.  
Sukamto Foundation, Inc.  
Tony Group  
Walmart  
Rebecca Ward  
Jodi Shin and Dean T. Yamamoto  
Luke Yeh

### **\$1,000 – \$2,499**

Anonymous  
AB & Associates Insurance  
Services, Inc.  
Accuity LLP  
Paula Akana Guanzon and  
Robert Guanzon  
Benjamin K. and Momi Akana  
Robert and Velma Akinaka  
ALM Management Services LLC/  
Ala Moana Hotel  
Alexander & Baldwin, LLC  
Aloha Petroleum, Ltd.  
American Carpet One Foundation  
Gregory Apa  
Patricia Arakaki  
Lynette C. Arakawa  
Helene Arata  
Armstrong Foundation  
Armstrong Produce  
Frank Atherton  
Atlas Connection, Inc.  
dba Beretania & Ward Union 76  
Gary Augustin  
Bank of Hawaii  
Charitable Foundation  
Neil Bates  
Ludela Belardo  
Bella Z. Bell  
Jeffrey and Renae Bell

Joan Bennet and Associates, Inc.  
William Bonnet  
Michael F. Broderick and  
Maile T. Meyer  
Diana-Lee Bunney  
Larry and Taehee Bush  
Lily Cabinatan  
Carlsmith Ball, LLP  
Carole Kai Charities Inc.  
Amy Chagami  
Charles Schwab  
Doug Chin  
Chinen & Arinaga  
Financial Group, Inc.  
Dr. Jaehyuk Choi  
Albert Chong  
Craig and Sandy Chong  
Ananda Chou  
Geraldine Choy  
Dr. Michael and Bina Chun  
C. Kent Coarsey and  
Rev. Amy Wake  
Colliers Monroe and Friedlander  
Herb and Nancy Conley  
Ronald and Roberta Cox  
Mike and Becca Dailey  
Deloitte & Touche, LLP  
Christopher Dods  
Walter Dods Jr.  
Michael and Lisa Doss  
Peter Drewliner  
Esther Dye  
Electricians, Inc.  
Elias Family Philanthropic Fund  
Dr. Arthur and  
Bonnie Ennis Foundation  
Ismael Eustaquio  
FCH Enterprises, Inc.  
Ferraro Choi and Associates, Ltd.  
First Hawaiian Bank Foundation  
Joan Fujita  
Gentry Homes, Ltd.  
Richard Gushman  
Lyle Hamasaki  
Martin Hamburger  
Barbara and James Hamlin  
Dr. William Haning III  
Jeffrey S. Harris and Sandi Chun  
The Hartley Foundation  
Haseko Development, Inc.  
Deanne Haugaard  
Hawaii Care & Cleaning, Inc.  
Hawaii Dental Service

Hawaii Electricians  
Hawaii Fire Fighters Association  
Hawaii Gas  
Hawaii Information Consortium  
Hawaii Operating  
Engineers Industry  
Hawaii Regional Council  
of Carpenters  
Hawaiian Host, Inc.  
H.T. Hayashi Foundation  
Blaine Hedani  
HEMIC  
Carl P. Hennrich and  
Alice Kuo-Hennrich  
Nelson Higa  
Scott and Christine Higashi  
Bonnie Hilory  
Dari Hing and Mike Glover  
Michael Hirai  
HMAA  
HNTB Corporation  
Francis Hogan  
Elizabeth Honzik  
Noa and Dina Hussey  
Randal Ikeda and Pamela Funai  
Imanaka Asato, LLC  
Cassidy Inamasu  
Dominic Inocelda  
Mabel Ishimoto  
Island Movers, Inc.  
Ken Ito  
J. Kadowaki, Inc  
Johnson Ohana  
Charitable Foundation  
JTB Cultural  
Exchange Corporation  
KAI Hawaii, Inc.  
Susie Kama & Thomas Popovich  
Maile and Norman Kanemaru  
Charles and Faye S. Kaneshiro  
Jane Katayama  
Keiki O Ka Aina  
Dr. Katrena Kennedy  
Kiewit Building Group, Inc.  
Wesley Kimura  
Michael Kita  
Roy Kobatake  
Eddie Koga  
Lindsay Kosasa  
KPMG, LLP  
Kumabe HR, LLC  
Kunimoto Family Fund of the  
Hawaii Community Foundation  
Morris and Judy Kunita

Thomas and Bianca Kusatsu  
Dr. Dennis and Judith Kuwabara  
Robert Kuwahara  
Laborers' International Union  
of NA, Local 368  
Walter and Shirley Laskey  
Michael H. and Carol Lau  
Gregory and Lucia Leong  
Foundation, Inc.  
Lorraine and Benjamin Leslie  
Genevieve Ley  
Life Fitness  
Locations Foundation  
Lum Yip Kee, Ltd.  
Edgar Russel Lynch  
Mandy MacMahan  
Brian and Miki Maeshiro  
Makai Container &  
Equipment Solutions LLC  
Bert and Charlotte Malott  
Stanley and Masumi Masamitsu  
Rodney and Lena Matsumoto  
Maui Divers of Hawaii, Ltd.  
Max Limited  
Catholic Chapel Community  
at Marine Corps Base  
Hawaii Chapel  
Roger McCawley  
Meadow Gold Dairies Hawaii  
The Merck Foundation  
Justin and Bobbi Mew  
Amy Miyamoto  
Wynn Miyamoto  
Michael and Mona Miyamura  
Dee Dee Miyashiro  
Chief Justice (Ret.) Ronald  
and Stella Moon  
Patrick and Lena Mori  
Morimoto & Nishioka  
Family Fund of the  
Hawaii Community Foundation  
Sanford and Frances Murata  
Scott and Lauren Nahme  
Debra Nielsen  
Helen Nip  
Hideo Noguchi  
Ian Okamoto  
Beryl Ono Stapleton  
Lisa Ontai and Peter T. Stone  
Richard Ornellas  
Alan M. and JoAnn Oshima  
Leighton and Mazie K. Oshima  
Michael Oya  
Pacific Links Hawaii

Parker, Inc.–Round Table  
Pizza Kailua  
Anthony Pfaltzgraff and  
Charlene Young  
Marda Phillips  
Pitluck Kido & Aipa, LLP  
Power Transmission Services, Inc.  
Donna and Sam Prather  
Randolph H. Murayama  
& Assoc., Inc.  
Tom and Joan-E Rapine  
The Redwoods Group Foundation  
Henry Rice  
Riggs Distributing, Inc.  
Rich Rinaldi  
Richard and Susan Rinaldi  
Thomas and Susan Risse  
Alice and Rob Roberts/  
Mermaids Hawaii  
Larry and Patricia Rodriguez  
Joan Rohlfing  
Rolloffs Hawaii, LLC  
Royal Contracting Co.  
Philip Sammer  
John and Carmen M. Scelsa  
Schwab Charitable Fund  
Donald Scott  
Gerald and Fay Sekiya  
Seven-Eleven Hawaii, Inc.  
The Sgan Family Charitable Fund  
Skydiving School, Inc.  
Clifford Smith  
State of Hawaii Organization of  
Police Officers (SHOPO)  
Bill and Trudy Stone  
Michael and Karen Street  
David and Carol Striph  
Sueda & Associates, Inc.  
Diane and Edwin Tabangay  
Craig Takahashi  
Daniel and Ethel Takamatsu  
Guy and Lorraine Tamashiro  
Carl and Jean Tanaka  
Keola and Alissa Taniguchi  
Target Corporation  
Joanie Teruya  
Title Guaranty of Hawaii, Inc.  
James Tollefson  
Sabrina Toma and Cedric Akau  
Troy and Naoko Tomita  
R.M. Towill Corporation  
Alex Uyeda

Kerri B. and John Van Duyn  
Walmart #3149  
Walmart Stores, Inc.  
Watanabe Ing, LLP  
Jhamandas Watumull Fund  
Jaidev and Julie Watumull  
WCIT Architecture, Inc.  
John Whalen  
Beth Whitehead  
Lance and Marcy Wilhelm  
Wilson Okamoto Corporation  
Robert Witt  
Lin & Ella Wong Foundation, Inc.  
Kiman and Brenda Wong  
Lisa Wong  
Stephen C.L. and Susan Wong  
Dr. Philip and Ann Wright  
WSP Hawaii, Inc.  
Xerox Hawaii  
Steven Yamamoto  
Dion Yasui  
August Yee  
YMCA of Honolulu–  
Bob Dye Endowment  
Yogi Kwong Engineers, LLC  
Robin and Lillian Yoshimura

**\$250 – \$999**

Anonymous  
50th State Poultry, Inc  
David Abe  
Wendy Abe  
Reggie Acosta  
Clarence Agena  
Seana Ah Kee  
Kathy and Randolph Ahlo  
Akamai Healthy Vending LLC.  
Betty-Ann Akana  
Akira Yamamoto Painting  
Gerry and Earle Alexander III  
Patricia Allen  
Thomas Allen  
Allied Builders System  
Aloha State Services, Ltd.  
Paul Alston  
American Business Marketing  
Albert Apo  
Dr. Linda Arakaki  
Roy and Charlotte Arakaki  
Terrance Arashiro  
Jeff Arce  
Violeta Arnobit

Connie M. Bacsa  
Richard Barrett  
Evelyn and Michael Barut  
BDF Subway, LLC  
Michaeline and Emma Belatti  
Carl Bendas  
Benefit & Risk Management  
Services, Inc.  
Benefit Plan Solutions, Inc.  
Jamie Bennett  
Richard Blangiardi  
Bomat Ltd., Co.  
Dennis Boulware  
Elizabeth and David Bremer  
Thomas P. and Laurie L. Broderick  
Genie Brown  
Tania Brown  
Lou and Ann Bunk  
Puanani Burgess  
George Burnett  
Scott Cabral  
California Pizza Kitchen  
Shelly Campbell  
Fe and Christopher Dumlaio  
Herbert Chang  
Melissa Chang  
Brian Chappel  
Warren and Kathleen Chee

Chevron Humankind Employee  
Engagement Fund  
Chris And Melissa Ching Benjamin  
Family Fund  
Deborah Ching  
Michael and Joyce Ching  
Shawn P. Ching  
Leburta Chock-Kanno  
Stephanie Choi  
Joseph Chong  
Charles and Lauren Chou  
Calvert Chun  
Jason Chun  
Lorin Chun  
Mark Chun  
Duke Chung Jr.  
Jeanne Chun-Turano  
Clinton and Suzy Churchill  
Henry B. Clark, Jr. and  
Charlotte Clark  
Shawn Coleman  
Commercial Roofing &  
Waterproofing Hawaii  
Commercial Sheetmetal Co.  
Conrad Enterprises Inc.  
Controlpoint Surveying, Inc.  
Bruce A. Coppa  
Jennifer Corley



Darlene Correa  
 Scott Craven  
 CRH Construction LLC  
 Beatriz Gaspar and Steven Croll  
 Paul Cunney  
 DataHouse Holdings Corp.  
 James Day  
 Jaunette De Mello  
 Letha DeCaires  
 Aileen and Howard Deese  
 David and Charmayne Del Rosario  
 Patricia Dela Pena  
 Jessica Dentel  
 Diabetes Action Research and  
 Education Foundation  
 Charles Dias  
 Ben Diones Jr.  
 Steksin and Kilahrina Diopulos  
 Amber Doig  
 Shin Domen  
 William and Patricia Domingo  
 Doris Duke Foundation  
 for Islamic Art  
 Anna Doyle  
 Anne Marie and Jim Duca  
 Tiffany Eason  
 Karen Ebato  
 Earlyn and Clifford Ebesu-Mosher  
 Carol Eblen  
 Electech Hawaii, Inc.  
 Dave Endo  
 Dennis Enomoto  
 Ross Esaki  
 Alejandro and Denise Espania  
 Toni Fasi  
 Jerry Felipe  
 Reynold and Lana Fernandez  
 Michael Ferry  
 Rita Filisi  
 First Insurance  
 Charitable Foundation  
 Leon F. and Heather Florendo  
 Cynthia and Clara Fong  
 Foodland Super Market, Ltd.  
 FOPCO, Inc.  
 John L. and Leighann C Frattarelli  
 Lynette Frazier  
 Joseph and Alice R. Freitas  
 Bob and Cindy Fricke  
 Doris Fuchikami  
 Samuel Fujikawa  
 Gary and Linda Fujitani  
 Ronald Fujiwara

Julia & Lance Fukumoto  
 Reid Fukumoto  
 Cynthia and Daniel Gagnon  
 Gajimarukai  
 Julie Galusha  
 Garlow Petroleum, Inc.  
 GE Foundation  
 Thomas and Shelly Geiter  
 Geolabs, Inc.  
 Gordon and Linda Gidlund  
 Larry Gilbert  
 Larry Goeas  
 Anthony H. and  
 Maria Helena Good  
 Glenn Goya  
 Robert A. and Mary Ellen Grace  
 Graylag Cabins  
 Adelbert Green  
 Joanne L. Grimes  
 Dr. Paul Hahn  
 William Hahn  
 Debi and Douglas Halcro  
 Sidney and Karen Hamada  
 Edgar and Helen Hamasu  
 Rosalind and James Hamby  
 Mufi Hannemann  
 Roy Harano  
 Harbor Pub & Pizza  
 Hartley & McGehee  
 Dr. Lester Harunaga  
 Schon Harunaga  
 Lynnelle Hasegawa and  
 Rod Shinno  
 Garrett Hatakenaka  
 Hawaii Quilt Guild  
 Hawaiian Cement  
 Garrett and Nancy Hayashi  
 HEI Charitable Foundation/  
 Hawaiian Electric Company  
 Samuel Heth  
 Audrey and Steven Hidano  
 Wendy Higa  
 John Higham  
 Leinaala Hilea  
 David Hirashiki  
 Gleason K. Hirata  
 Irving and Debra H.N. Hirata  
 Dr. Mike Ho  
 Patrick Hodai  
 Malcolm Hong  
 Kenneth Hoo  
 Lyle Hosoda  
 Kirk Hovious

Susan Lee and Charles Hurd  
 Sarah Hussey  
 IBM Corporation  
 Janet Ignacio  
 Jonathon Ikea  
 Ikeda & Wong, CPA, Inc.  
 Howard and Gayle Ikeda  
 Valerie Ikemori  
 Ilima Hotel  
 In+Form Design, Inc.  
 Marshall Ingraham  
 Kevin Inn  
 Glenn Inouye  
 Ralph Inouye  
 Dennis and Patsy Irie  
 Dr. Kathy Ishimoto  
 Island X Hawaii  
 Garan and Adele Ito  
 Chenise Iwamasa  
 James Campbell Company, LLC  
 JN Group, Inc  
 Carla and Albert Joaquin  
 John Loomis YMCA Fund  
 Keahi Kaawa  
 Andrew and Lea Kagawa  
 Joyce Kagawa  
 Kaimuki Y's Men Club  
 Sarah Kalicki-Nakamura  
 Kalihi Business Association  
 Curtis Kamisugi  
 James N. and Gladys S. Kanehira  
 Melvin Kaneshige  
 Arthur Kaneshiro  
 Harry Kaneshiro  
 Irma Kaneshiro  
 Marion Kaneshiro  
 Steven Kaneshiro  
 Marian Kaneta  
 Daniel Kang  
 Kaonohi Zanshin Aikido  
 Terrance Karels  
 Ted Kashiwamura  
 Sue Ann Kauanui  
 Amy E. Kawakami  
 Nolan and Donna Kawano  
 Athena Keehu  
 Kent and Elizabeth Keith  
 Wyman Kenagy Jr.  
 Bob Kern  
 Alan Kido  
 Lawrence Kim  
 Dayna Kirgan



Cynthia and Guy Kitagawa  
 Barbara and Richard Klemm  
 Edwin Kobashigawa  
 Wesley Kobayashi  
 Brenda and Hugh Kodama  
 Wayne K and Ann Kodama  
 Donovan Koki  
 Kona Brewery, LLC  
 Steve and Donna R. Kranz  
 Kua'aina Sandwich Shop

Dexter and Mary Kubota  
 Alice and Alexander Kufel  
 Neal Kugiya  
 Warren Kunimoto  
 Harry and Pauline Kunimune  
 Kunz & Germick  
 Hadley Kunz  
 Milton Kurashige  
 Brandon Lacuesta  
 Toni and Stephen Lathrop-Lee  
 Richard K.Y. Lau  
 Susan Lau  
 Law Offices of James J. Stone  
 Law Offices of Wesley Y.S. Chang

Van Law  
 Christopher Lawson  
 Albert Lee  
 Dr. Mark Lee  
 William Lee  
 Merrily-Ann and Peter Leong  
 Ryan Leong  
 Bill Leung  
 Janice Leung  
 Michael Leung  
 David C. and Pam Livingston  
 Kem and Junko Lowry  
 Samuel and Esther Luna  
 Gregory Lung

Joseph and Mariko Lyons  
 Patti J. Lyons  
 MK Equipment Corp.  
 Miche MacMahan  
 Frances Maekawa  
 Ann Mahi  
 Margie Maket  
 Gena Marques  
 Marsha J. Marumoto and  
 Brian J. Pactol  
 Stanford and Doretta Masui  
 Matsumoto & Clapperton  
 Reid and Yoko Matsumoto  
 Maui Laminates, Inc.  
 Emily McCarren

Jo Ann and Jack McCarthy  
 Jewel McDonald  
 Oliver McGuire  
 Peter Meagher  
 Mechanical Enterprises, Inc.  
 Matt Megorden  
 Bettina Mehnert  
 Menehunes YMC  
 Metropolitan Y's Mens  
 District Council  
 Lois Meyer  
 Jason Minami  
 Mitsunaga Construction, Inc.  
 Caroline Miura  
 Jacob Miyasato  
 Kilo Moa  
 Susan Moniz  
 Rachel Moriyama  
 Rodney and Charleen Mukai  
 Mark Murakami  
 Mark Muranaka  
 Nagamine Okawa Engineers, Inc.  
 Richard Nagashima  
 William Nagle III  
 Nelson Nakagawa  
 Van Nakagawara  
 Craig and Claire L. Nakatsuka  
 Pamela Neff  
 Gary Nishikawa  
 Kent Nishimura  
 Mike Nitta  
 Nordic PCL Construction, Inc.  
 Joseph and Alice Nunogawa  
 Nuuanu Y's Men's Club  
 Jordan Odo  
 Wayne and Phyllis Ogasawara  
 Harold H. Ohata and  
 Dr. Yoshie Takagi  
 Ronald and Janet Oi  
 Ronnie Okazaki  
 Ron Okimoto  
 Phyllis Oliver  
 Olomana Group LLC  
 Walter and Dorothy Osakoda  
 James Ouchi  
 Barbara Oyama  
 Pacific Architects, Inc.  
 Pacific Meritage  
 Stephanie Pahia  
 Palolo Toastmasters  
 Michael Palomares



Jonathan Pang	Single Fin Fund of the	Hollace Turl	Deeann Yorimoto
Paramount Fitness Corp.	Hawaii Community Foundation	UBS	Sandra Yorong
Corey and Jan Park	Steven Sofos	Patrick and Lynette Uchigakiuchi	Yoshida Family Charitable Fund
Hoyt Parker	Randall Spear	Amy and Roy Umebayashi	Vernon Yoshida
Megan Parker	SSFM International, Inc.	Sammie Underwood	Howard Yoshiura
Wayne Parsons	Oswald Stender	Lloyd Unebasami	Keith Young
Wesley Pei	Stephanie C., Inc.	United Public Workers	Robert and Laura Young
Monty Pereira	Robert Stivers-Apiki	Unitek Insulation, Inc.	Cindy Kwan Yee and Carlton Yuen
Richard Perkins	Frances Stuart	Barry and Florence Utsumi	Elarka Yuen
Jayne Peterson	Esther Suzuki	Stacey and Sunia Utu	Joel and Eileen Yuen
Nancy Pettiford	Guy Tagomori	Amy Uyechi	Omar Zaldana
Grant Phillips	Marcia Taira	Susan S. Uyesugi	Janice Zane
David Pietsch Jr.	Terry T. and Eleanor Taira	Floraine Van Orden	Michelle Zippay
Plumbing & Mechanical	Jill Takaezu-Harper	Tom Van Winkle	
Contractors Assn. of Hawaii	Lee and David Takagi	Andrew and Arianne VanDerWege	
Praesidium, Inc.	Lance Takahashi	Debbie Victor	
Price, Okamoto, Himeno & Lum	Steven T. and Kathleen Takaki	Wailana Coffee House, LLC	
Pu'a Foundation	Matthew Takamine	Waipahu Community Based	
RF Stearns Inc	Gregg Takara	Development Organization	
Karla and Vic Redding	Masa (Wallace) Takayesu	Waipahu LLC	
Diane Reitsperger	Nelson Takenaka	Wesley Waniya and	
Camille Rellinger	Kevin Tang	Dr. Karin Fujitani	
Rezents & Crowley, LLP	Wendy and Eric Taramasco	Arden Warren	
Andrew Rhee	Glenn Tarumoto	Evan and Cristina Watarida	
Richard & Maude Lau	Jean Tateishi	Elizabeth Weatherford	
Foundation, Inc.	Roy Tateishi	Susan Wehrman	
Michelle Robertson	Tattoo Krew Ink	Richard Wheelock	
Gayle Rojas	Daniel Tengan	Emmet and Betty White	
Rotary Club of East Honolulu	Terry Terry	Wholesale Grocers, Inc.	
Karin Rushford-Martin	Dexter Teruya	Brett Wiggins	
Andrea Russell	The Triangle Club Of Hawaii	Tara Wilson	
Michael Sakai	The Wedding Ring Shop	Michael Wing	
The San Francisco Foundation	Reid S. Thebault	Julia Wo	
Penelope and Norman Saruwatari	Wilja Joyce and	Arthur Wong	
Patricia Sasaki	Stephen R. Timpson	Bertram Wong	
Harry and Susie Saunders	Peggy Tobaru	Denis Wong	
Michael Sawai	Franklin Tokioka	Gordon Wong	
Schlack Ito, LLLC	Tom Coffman Multimedia	Jonathan Wong	
Brian Sen	Randall Tom	Leona and Robert L.K. Wong	
David Shanahan	Kirk Tomita and	Sally and Willie Wong	
Sheet Metal Workers Local 293	Stephanie Sakurai	Wendi Woodstrup	
Orin Sherman	Lane Tomita	Megan Wright	
Michael Shibata	Ross Tomita	Mavis Yamada	
Stephanie and Justin Shim	Sharon Tomita	Stanley Yamagata Jr.	
Thomas and Maureen Shimabuku	Robert L.P. and	Zelah Yamagata	
Shin Domen/CSI, Inc.	Geraldine Gaye Tong	Jean Yamaguchi	
Richard Shinseki	Jane Tonokawa	Raymond Yamasaki	
Derrick Shiroma	Total Fitness USA Inc.	Kenneth Yamashita	
Donna Shiroma	Jennifer K. Townsend	Robert Yee	
Gary Simon	James Toyama	Terrence Yeh	
	Yoshi Tsukayama	Lesli Yogi	
	Wendy Tupper		

# Board of Directors

## OFFICERS

Lance Wilhelm, *Chairman*  
Steven C. Ai, *Vice Chair*  
Bruce A. Coppa, *Vice Chair*  
Tim Johns, *Vice Chair*  
Keith M. Sakamoto, *Vice Chair*  
Dr. Virginia Pressler, *Secretary*  
Wayne Hamano, *Treasurer*

## BOARD MEMBERS

Benjamin K. Akana  
Rick Blangiardi  
Christine Camp  
Dr. Paul J. Carry  
P. Roy Catalani  
Craig Chong  
Carl E. Choy  
Dr. Michael J. Chun  
Adelia Chung  
Ronald R. Cox  
Dr. Kenny Fink  
Joan E. Fujita

Jeffrey S. Harris  
Carl P. Hennrich  
Lee Hopkinson  
Robert K. Iopa  
Anton Krucky  
John T. Leong  
Rodney Matsumoto  
Bettina Mehnert  
Sanford Murata  
Thomas Risse  
Joan H. Rohlfing  
Russell Saiki  
David Striph  
Lynette Lo Tom  
Rebecca S. Ward  
John White  
K. Elizabeth Whitehead  
Reuben S.F. Wong  
Jim Yates  
August Yee

## BRANCH REPRESENTATIVES

Casey Agena, Atherton Branch  
David Del Rosario, Windward Branch  
Francis Hogan, Nu'uaniu Branch  
Kathy Ishimoto, Mililani Branch  
Michael Oya, Camp Erdman  
C. Michael Street, Central Branch  
Monty Pereira, Leeward Branch  
Ryker Wada, Kaimuki-Waialae Branch  
Gary Yoshida, Kalihi Branch  
Philip Sammer, Y Service Club

## Executive Staff

**Michael F. Broderick**  
President & CEO

**Michael Doss**  
Executive Vice President & COO

**Michael Chinaka**  
Senior Vice President & CFO

**Kerri Van Duyne**  
Vice President of Development

**Lisa Ontai**  
Vice President of Marketing and  
Mission Advancement

**Sandi Mactagone**  
Assistant to the President



# Branch Board of Managers and Executive Directors

## **ATHERTON BRANCH**

Casey Agena, Chair  
Ananda Chou, Executive Director

### **BOARD MEMBERS**

Carl Ackerman  
Casey Agena  
Stephanie Choi  
Michael Kawaharada  
Cynthia Kitagawa  
Colleen Leung  
Ann Mahi  
Emily McCarren  
Russell Motter  
Bryce Uyehara  
Kawika Villa  
Kiman Wong  
Lesli Yogi

## **CAMP H.R. ERDMAN**

Michael Oya, Chair  
Tom Rapine, Executive Director

### **BOARD MEMBERS**

Roy Arakaki  
Gary Augustin  
Alan T. Nagao  
Claire Nakatsuka  
Ian Okamoto  
Michael Oya  
John Scelsa  
Tara Wilson  
Philip Wright, M.D.

## **CENTRAL BRANCH**

Ian Santee, Chair  
Troy Tomita, Executive Director

### **BOARD MEMBERS**

Melissa Chang  
Del Green  
Debi Halcro  
Alex Jakovljevic  
Roy Kobatake  
Neal Kugiya  
Dave Livingston  
Lindsey Nip  
Jonathan Pang  
Phil Sammer  
Ian Santee  
Michael Street  
Michael Wing

## **KAIMUKĪ-WAI'ALAE BRANCH**

Michael Lau, Chair  
Anthony Yee, Executive Director

### **BOARD MEMBERS**

Ralph Aona  
Shelly Campbell  
Deanne Haugaard  
Athena Ke'ehu  
Michael H. Lau  
Jason Minami  
Phyllis Oliver  
Craig Takahashi  
Sharene Urakami-Oyama  
Ryker Wada

## **KALIHI BRANCH**

Gary Yoshida, Chair  
Kyle Ishizaka,  
Executive Director

### **BOARD MEMBERS**

Robert Akinaka  
Kevin Chung  
Brandon Dela Cruz  
William Domingo  
Dennis Enomoto  
Jerry Felipe  
Leon Florendo  
Ron Fujiwara  
Wendy Higa  
Joyce Kagawa  
Steven Kaneshiro  
Wayne Kodama  
Thomas Kusatsu

Brian Maeshiro  
Stanford Masui  
Mark Murakami  
Craig Nakatsuka  
Alice Nunogawa  
Geoffrey Pang  
Steven Takaki  
Dan Takamatsu  
Jean Tanaka  
Barry Utsumi  
Nicole Velasco  
Evan Watarida  
Gary Yoshida

## **LEEWARD BRANCH**

Monty Pereira, Chair  
Jennifer Townsend,  
Executive Director

### **BOARD MEMBERS**

Patricia Arakaki  
Reid Fukumoto  
John Higham  
Dominic Inocelda  
Michael Miyamura  
Laurie Kawasaki  
Dwight Kawata  
Zenaida Lopez  
Stan Masamitsu  
Susan Moniz  
Monty Pereira  
Guy Tamashiro  
Robert Tong  
Sandi Yorong

## **MILILANI BRANCH**

Dr. Kathy Ishimoto, Chair  
Keola Taniguchi,  
Executive Director

### **BOARD MEMBERS**

Karen Ebato  
Dr. Kathy Ishimoto  
Todd Jackson  
Dr. Dennis Kuwabara  
Robert Kuwahara  
Walter Osakoda  
Michael Sugano  
Dexter Yee

## **NU'UANU BRANCH**

Luke Yeh, Chair  
Randal Ikeda, Executive Director

### **BOARD MEMBERS**

Randolph Ahlo  
B.A. Akana  
Gregory Apa  
Lynette Arakawa  
Joanne Arizumi  
Albert Rick Chong  
Alan Fujii  
Blaine Hedani  
Audrey Hidano  
Frank Hogan  
Sarah Kalicki-Nakamura  
Brian Kealoha  
Wes Kimura  
Marie Kumabe  
Albert Lee  
Jewel McDonald  
Justin Mew  
Karen Miller  
Scott Nahme  
Beryl Ono-Stapleton  
Marcia Taira  
Dane Teruya  
Sabrina Toma  
Lisa Wong  
Stephen Wong  
Dion Yasui  
Luke Yeh

## **WINDWARD BRANCH**

David Del Rosario, Chair  
Noa Hussey, Executive Director

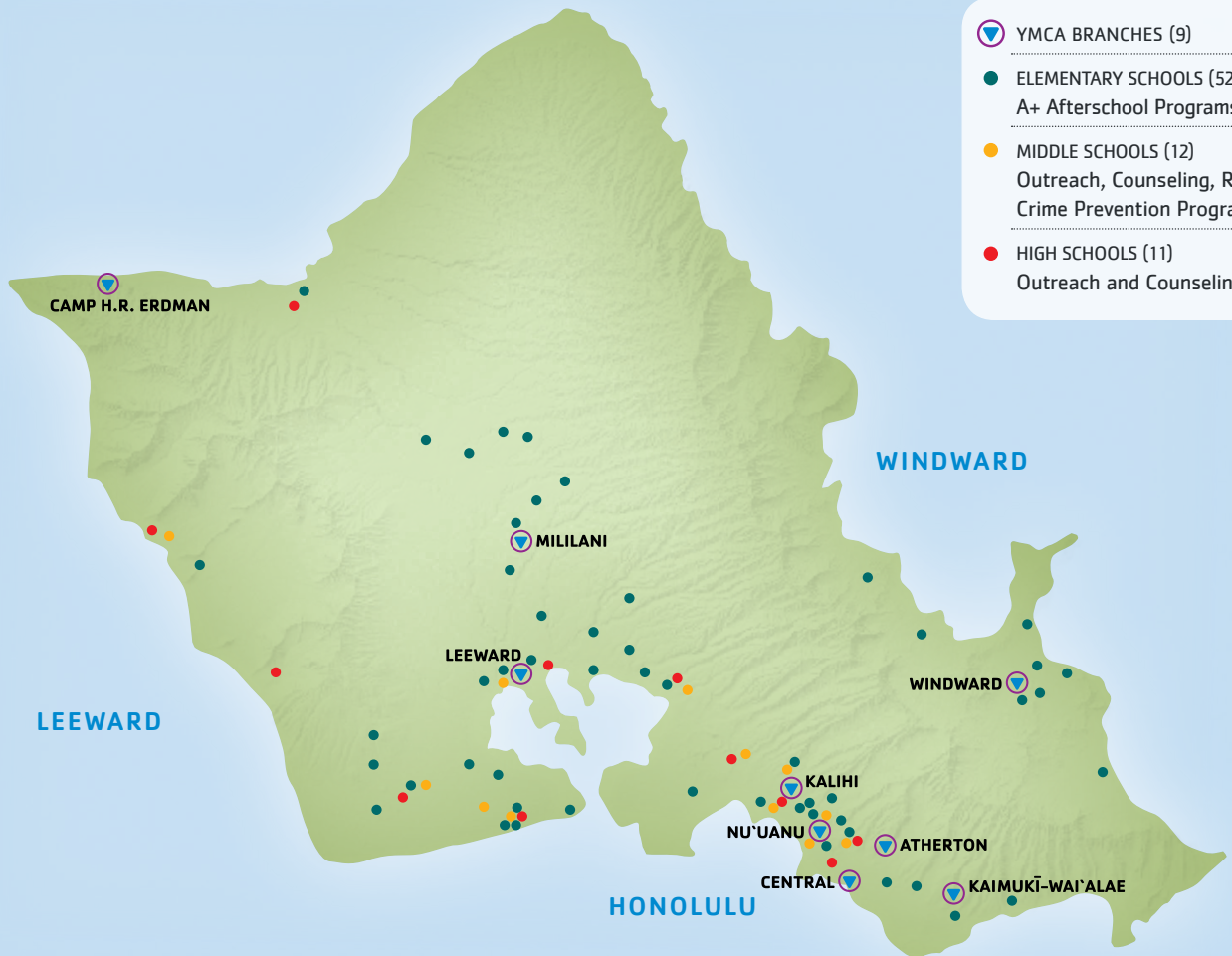
### **BOARD MEMBERS**

Dr. Paul J. Carry  
Aileen Deese  
Letha Decaires  
David Del Rosario  
Dan Dufrene  
Ismael Eustascio  
Barbara Hamlin  
Katrena Kennedy  
Marion Liu  
Russell Lynch  
Dr. Katrena Kennedy  
Dan Port  
John Seth  
Arthur Wong



**YMCA OF HONOLULU**  
 1441 Pali Highway  
 Honolulu, Hawai'i 96813  
 www.ymcahonolulu.org

NONPROFIT ORG.  
 U.S. POSTAGE  
**PAID**  
 HONOLULU, HI  
 PERMIT NO. 207



- YMCA BRANCHES (9)
- ELEMENTARY SCHOOLS (52)  
A+ Afterschool Programs
- MIDDLE SCHOOLS (12)  
Outreach, Counseling, Rural Youth  
Crime Prevention Programs
- HIGH SCHOOLS (11)  
Outreach and Counseling Programs

**METROPOLITAN OFFICE** 531-YMCA  
 1441 Pali Highway, Honolulu, HI 96813

**ATHERTON** 946-0253  
 1810 University Avenue, Honolulu, HI 96822

**CAMP H.R. ERDMAN** 637-4615  
 69-385 Farrington Highway, Waiialua, HI 96791

**CENTRAL** 941-3344  
 401 Atkinson Drive, Honolulu, HI 96814

**KAIMUKI-WAI'ALAE** 737-5544  
 4835 Kilauea Avenue, Honolulu, HI 96816

**KALIHI** 848-2494  
 1335 Kalihi Street, Honolulu, HI 96819

**LEEWARD** 671-6495  
 94-440 Mokuola Street, Waipahu, HI 96797

**MILILANI** 625-1040  
 95-1190 Hikikaulia Street, Mililani, HI 96789

**NU'UANU** 536-3556  
 1441 Pali Highway, Honolulu, HI 96813

**WINDWARD** 261-0808  
 1200 Kailua Road, Kailua, HI 96734